

Dell PowerConnect W-Series Instant Access Point Quick Start Guide

This Quick Start Guide will assist you to quickly connect and configure a Dell PowerConnect W-Series Instant Access Point (IAP). To learn more about Dell PowerConnect W-Series Instant Access Points and for detailed configuration information, see the [Dell PowerConnect W-Series Instant Access Point User Guide](#).

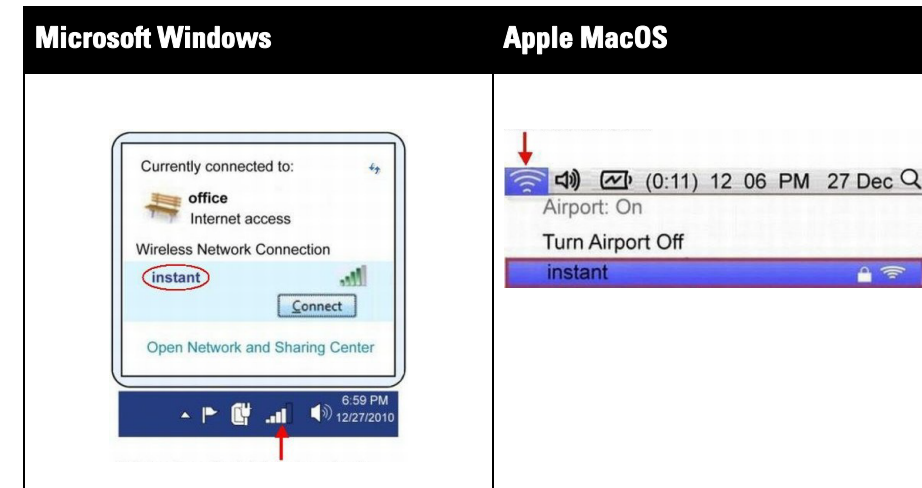
Getting Started

1. **Get an IP address**—You will require an IP address to connect to a network. To get an IP address from a DHCP server in your network:
 - a. Connect the IAP to an intermediate gateway router or switch that has connectivity to the DHCP server.
 - b. Power on the IAP. The IAP receives an IP address provided by the switch or router. Power the IAP either by plugging to an Ethernet cable coming from a 802.3af Power over Ethernet (PoE) switch or device, or by connecting it to an AC adapter.

Note: After the IAP starts up, it will try to do DHCP if static IP configuration is not available. If DHCP times out, a default IP within 169.254.x.y/16 subnet will be configured on the IAP.

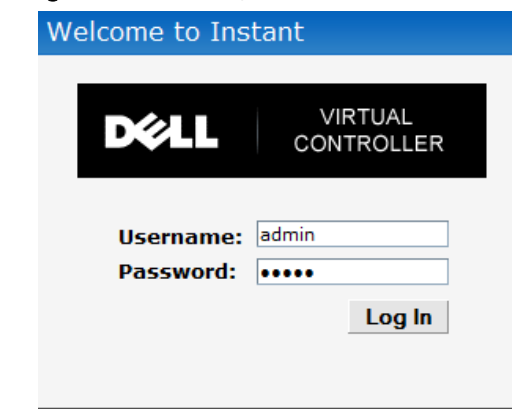
2. **Connect to the provisioning Wi-Fi network**—Connect a wireless enabled client to the provisioning Wi-Fi network. The provisioning network name is **instant**. The following [Table 1](#) shows how to find the **instant** wireless network using Windows 7 or Mac OS. Click the wireless network icon and select **instant** network.

Table 1 Connect to provisioning network in Microsoft Windows and Apple MacOS



3. **Log in to the Dell PowerConnect W-Series Instant Access Point WebUI**—Open a web browser and enter <http://instant.dell-pcw.com/> in the address bar to access the Dell PowerConnect W-Series Instant Access Point login screen. If you enter any other URL, you are redirected to the Dell PowerConnect W-Series Instant Access Point login screen. In the login screen, as shown in [Figure 1](#), enter the following credentials:
 - Username - admin
 - Password - admin

Figure 1 WebUI Login Screen



4. **Select the Country Code**—A **Country Code** box, as shown in [Figure 2](#) might appear after you successfully log in to the WebUI. Select your country code from the drop-down menu.

Note: The Country Code will not appear and you cannot change the country code for the IAPs designated for US, Japan, and Israel.

Figure 2 Country Code box

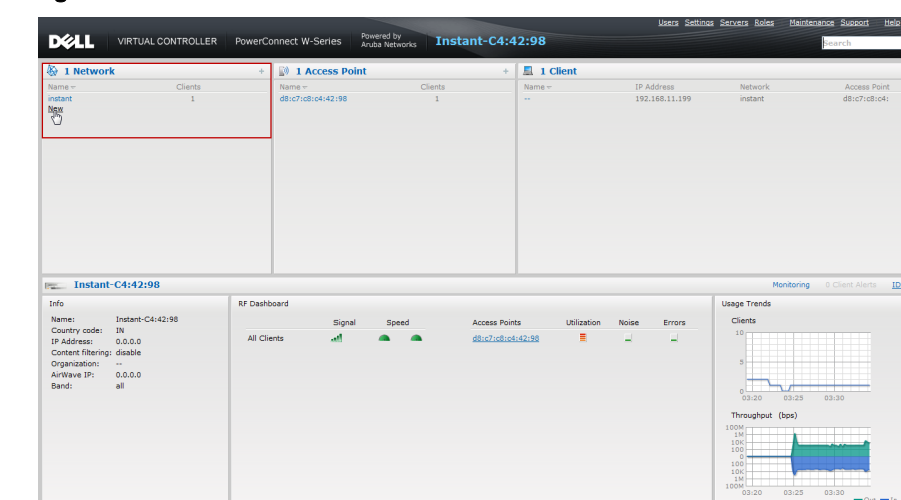


Creating a Network

The Dell PowerConnect W-Series Instant Access Point user interface is a standard web based interface that allows you to configure and monitor an IAP network.

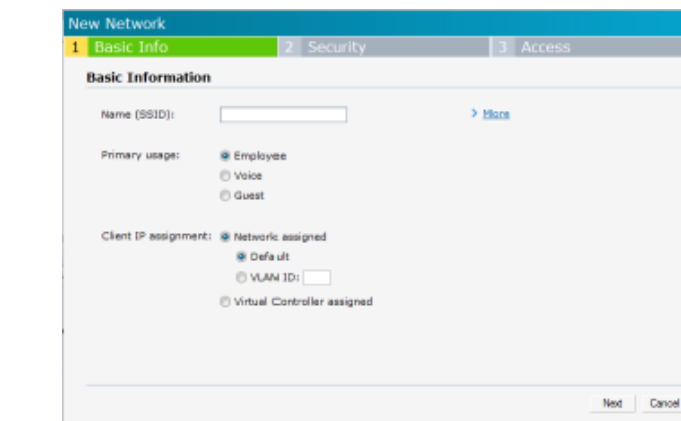
5. In the Network window, click the New link, as shown in [Figure 3](#).

Figure 3 Instant User Interface



6. The New Network window appears, as shown in [Figure 4](#).

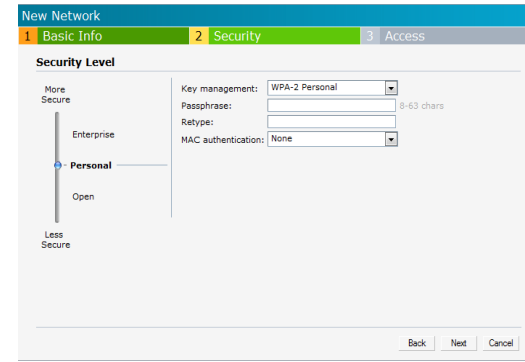
Figure 4 New Network window



7. In the **Basic Info** tab, shown in [Figure 4](#), enter a name for the network in the **Name (SSID)** text box. Click **Next** to continue.
8. In the **Security** tab, shown in [Figure 5](#), enter a passphrase in the **Passphrase and Retype** fields. Click **Next** to continue.

Note: Dell recommends that you note the passphrase for future use.

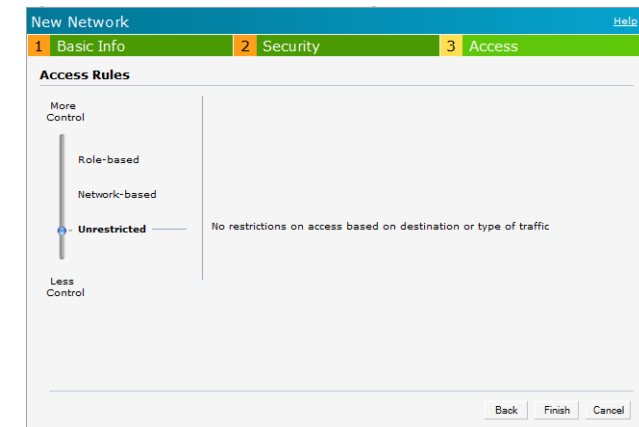
Figure 5 Security tab



Note: For additional security level options, refer to the **Dell PowerConnect W-Series Instant Access Point User Guide**.

- In the Access tab, the default is the Unrestricted option. For information about the Network based and Role-based access rule settings, refer to the **Dell PowerConnect W-Series Instant Access Point User Guide**.

Figure 6 Access tab



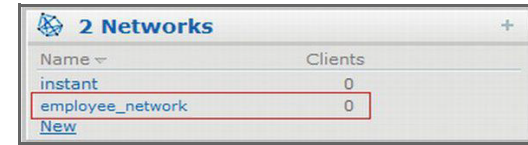
- Click **Finish** to close the window. The new network that you created is now added to the **Networks** window.

Verifying WebUI and LEDs

After setting up the Dell PowerConnect W-Series Instant Access Point and adding a network, you can use the WebUI and the LEDs to verify the operating status of the Dell PowerConnect W-Series Instant Access Point.

Using the WebUI—Verify the newly created network is displayed in the Networks window, as shown in [Figure 7](#).

Figure 7 Verify the newly added wireless network



- Disconnect client from the **instant** provisioning network.
- Connect client to the network you created, as described in [step 2](#).
- Login to the Dell PowerConnect W-Instant Access Point WebUI, as in [step 3](#).

The **instant** provisioning network is automatically deleted and should no longer be present.

Note: Dell recommends that you change the administrator login password. Refer to the **Dell PowerConnect W-Series Instant Access Point User Guide** in the section titled Management Authentication Settings.

- Using LEDs**—Use the LEDs to verify the operating status of the IAP. The LED functionality is described in the **Install Guide** included with your **Dell PowerConnect W-Series Instant Access Point** in the section titled **Verifying Post-Installation Connectivity**.
 - PWR:** Steady Green indicating that power is on and the device is ready.
 - ENET:** Green or Amber (depending on Ethernet link speed).
 - 11A/N:** Steady Green or OFF, indicating the state of the 5GHz radio.
 - 11B/G/N:** Steady Green, indicating the state of the 2.4GHz radio.

Contacting Support

Web Support	
Main Site	http://www.dell.com
Support Site	https://support.dell.com
Dell Documentation	https://support.dell.com/manuals

Dell PowerConnect W-Series Instant Access Point Quick Start Guide



Copyright

© 2011 Aruba Networks, Inc. Aruba Networks trademarks include  **airwave**, Aruba Networks®, Aruba Wireless Networks®, the registered Aruba the Mobile Edge Company logo, and Aruba Mobility Management System®. Dell™, the DELL™ logo, and PowerConnect™ are trademarks of Dell Inc.

All rights reserved. Specifications in this manual are subject to change without notice. Originated in the USA. All other trademarks are the property of their respective owners.

Open Source Code

Certain Aruba products include Open Source software code developed by third parties, including software code subject to the GNU General Public License (GPL), GNU Lesser General Public License (LGPL), or other Open Source Licenses. The Open Source code used can be found at this site:

http://www.arubanetworks.com/open_source

Legal Notice

The use of Aruba Networks, Inc. switching platforms and software, by all individuals or corporations, to terminate other vendors' VPN client devices constitutes complete acceptance of liability by that individual or corporation for this action and indemnifies, in full, Aruba Networks, Inc. from any and all legal actions that might be taken against it with respect to infringement of copyright on behalf of those vendors.

